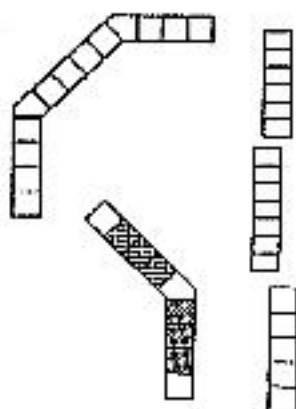
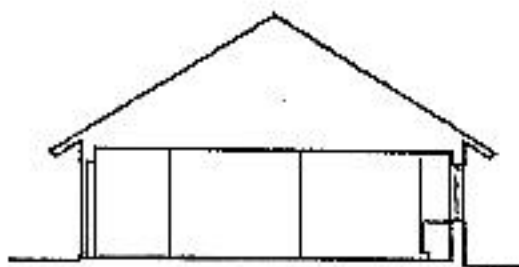


# Boligtype 2A.1 62m<sup>2</sup>

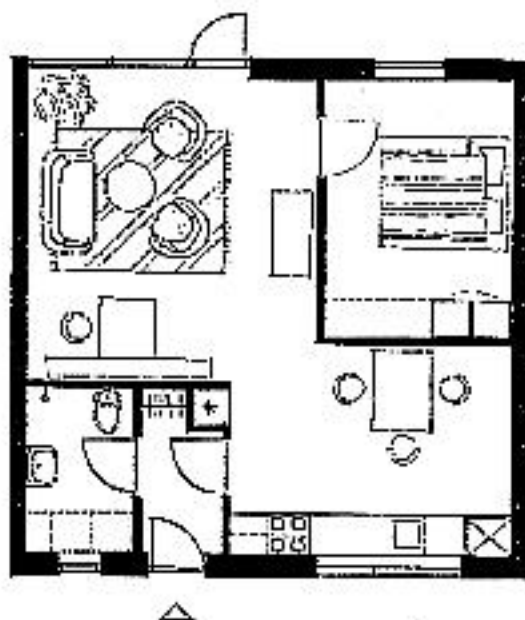
Rev. d. 16.3.63

Andelsboligforeningen  
HUMLEBÆK I



Tusnumbet 443 444 446 450 452 454

Boligtypens placering i bebyggelsen



Forbehold for ændringer. Der kan fore-  
komme mindre ændringer i ud- og indretning

Plan, målt 1:100

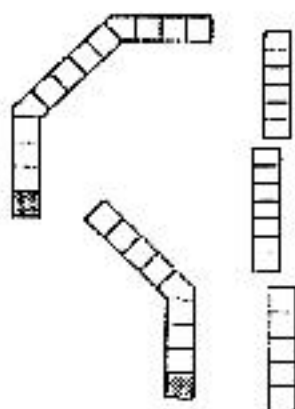
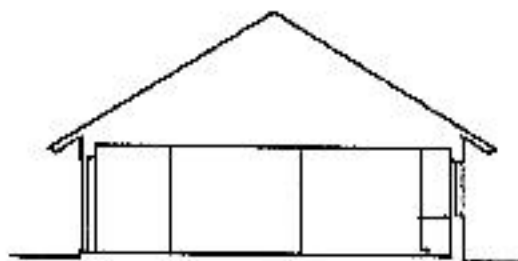
Skala 1:100

0 1 2 3 4 5 6 7 8 9 10 m

# Boligtype 2A.2 62 m<sup>2</sup>

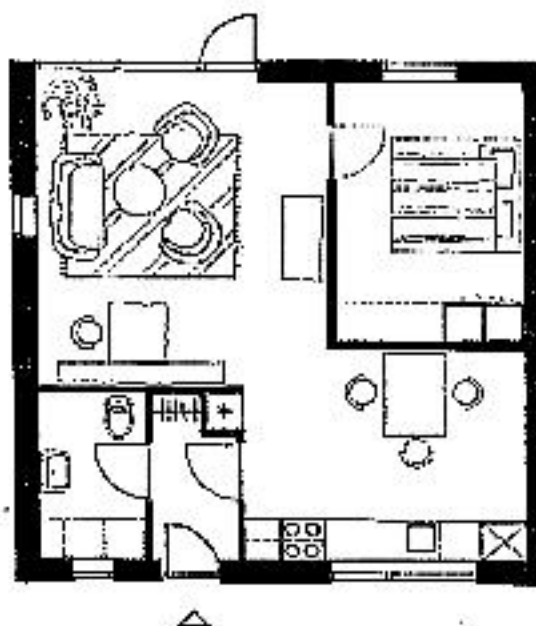
Rev. d. 16.7.86

Andelsboligforeningen  
HUMLEBÆK I



Stueplan 0/1 455

Boligtypens placering i nabyskelser



Fritidsbolig for medlemmer. Der kan fore-  
komme mindre ændringer i ud- og indretning

Plan, sk. 1:100

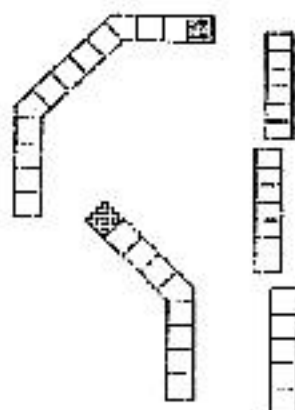
1 cm = 1 m

0 1 2 3 4 5 6 7 8 9 10 m

# Boligtype 2A.3 62 m<sup>2</sup>

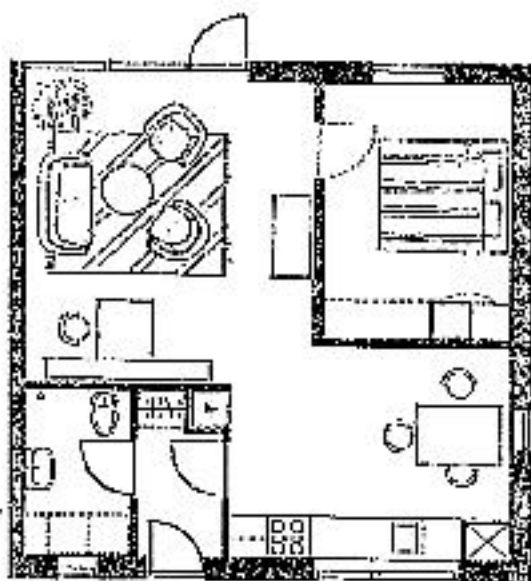
Rev. d. 16.3.69

Andelsboligforeningen  
KUMLEBÆK I



Udvalgte 444 510

Boligtypens placering i byggeriet



Tilbehør til andelen. Der skal fore-  
tages visse ændringer i mål og indretning

1:50, 1:50, 1:100

1:50

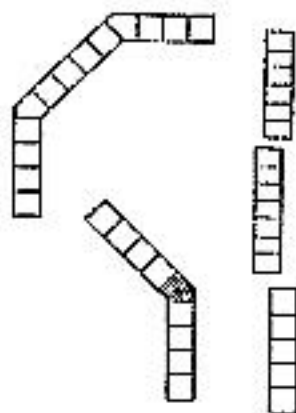
0 1 2 3 4 5 6 7 8 9 10

5m

# Boligtype 2A.4 61 m<sup>2</sup>

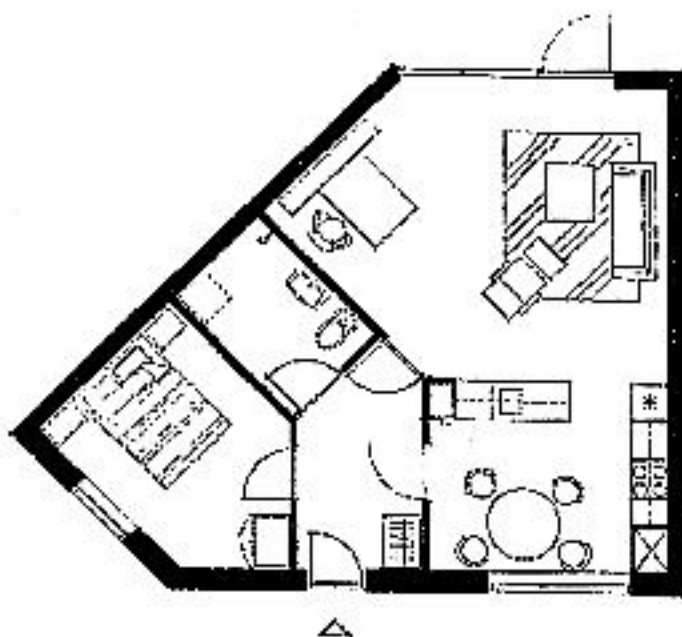
Rev. d. 10.3.86

Andelsboligforeningen  
HUMLEBÆK I



Rev. juni 86 448

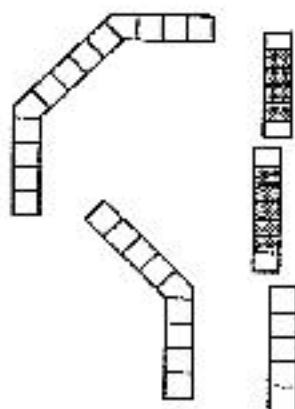
Boligtypeens placering i boligtypen



# Boligtype 3B.1 89 m<sup>2</sup>

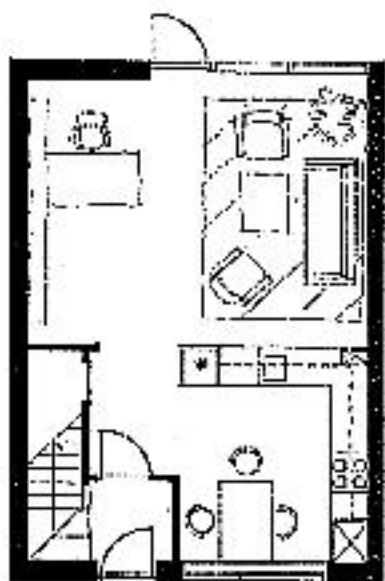
Rev. d. 16.3.88

Andelsboligforeningen  
HUMLEBÆK I

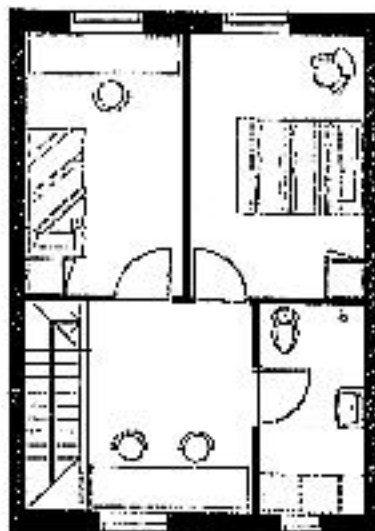


Hufvudstad 070 472 473 475 474  
011 406 409 412

Boligtypens placering i byggepladen



0. etage



1. etage

Forbehold for ændringer. Der kan forekomme mindre ændringer i udf. og indretning

Plan, målt 1:100

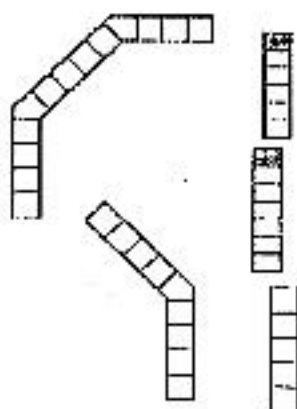
1 meter



# Boligtype 3B.2 89 m<sup>2</sup>

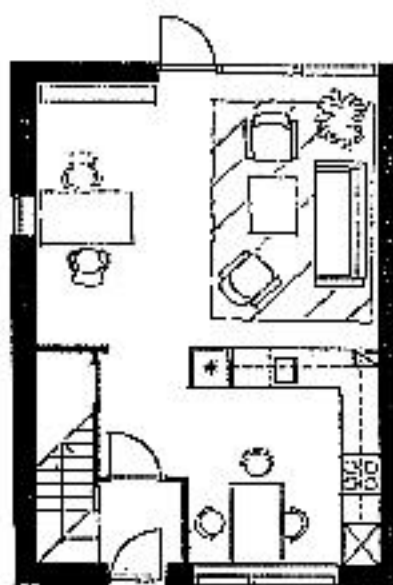
Rev. d. 10.3.88

Andelsboligforeningen  
HUMLEBÆK I

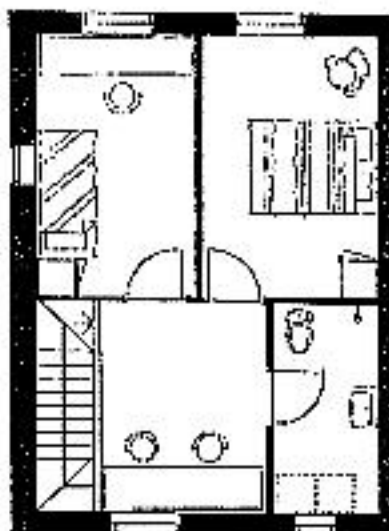


Byggetegn nr. 412 150

Boligtypens placering i bebyggelsen



Stue

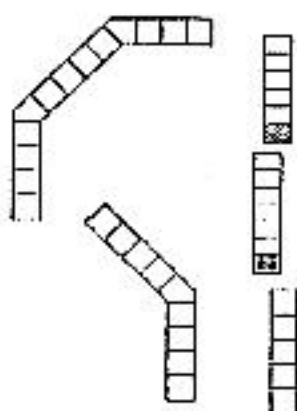


1. sal

# Boligtype 3B.3 69 m<sup>2</sup>

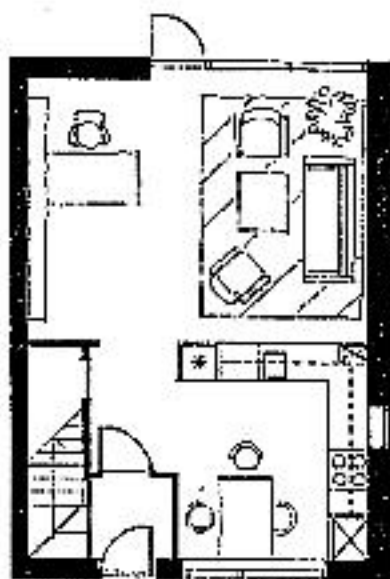
Rev. d. 16.3.86

Andelsboligforeningen  
HUMLEBÆK I

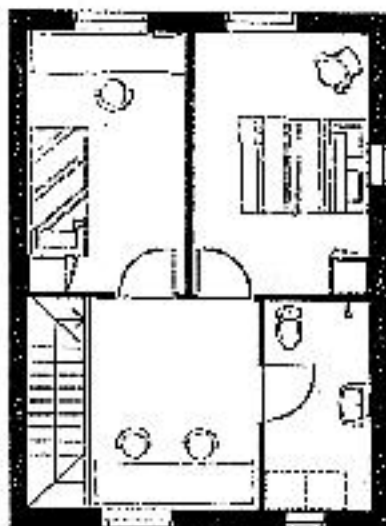


Husnummer: 403 453

Boligtypens placering i bebyggelsen



1. sal



2. sal

Forbehold for ændringer. Der kan fore-  
komme mindre ændringer i mål og indretning

Plan, mål 1:100

100 cm

0 1 2 3 4 5 6 7 8 9 10

# Boligtype 3C.4 87 m<sup>2</sup>

Rev. d. 18.3.80

Andelsboligforeningen  
HUMLEBÆK I

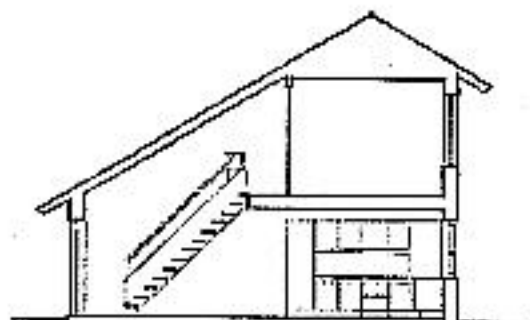
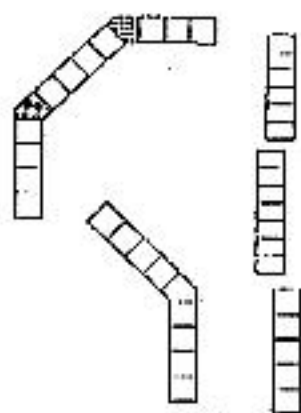
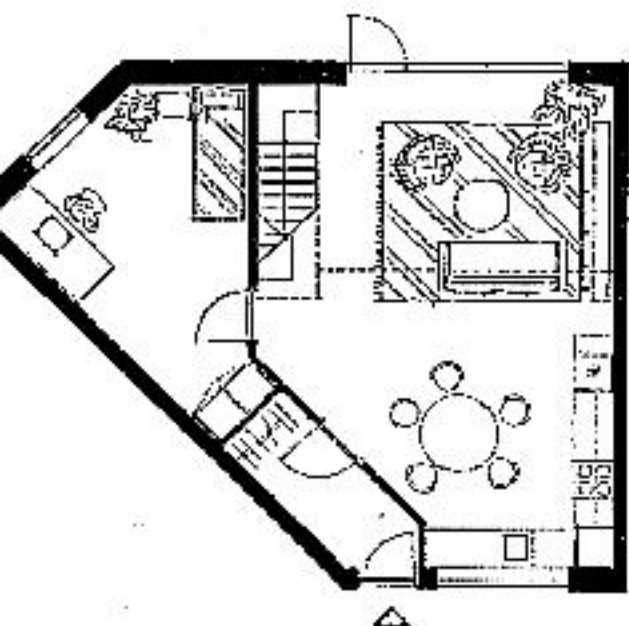


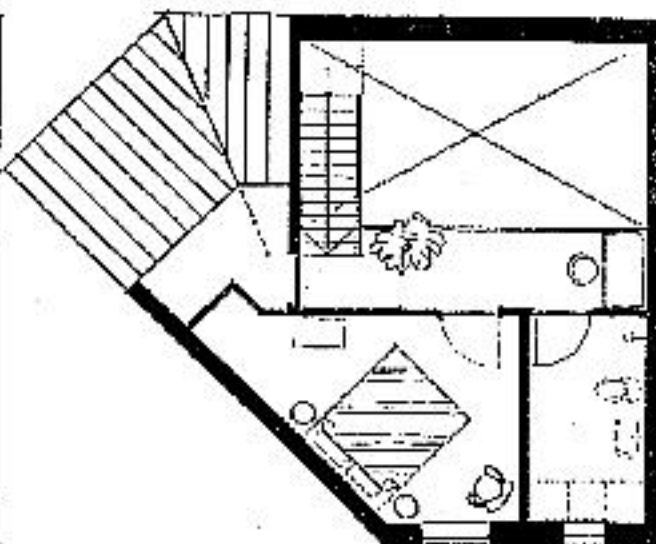
Illustration 480 450



Boligtypens placering i byggeplanen



Stuen

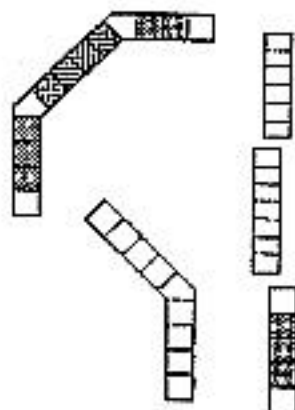
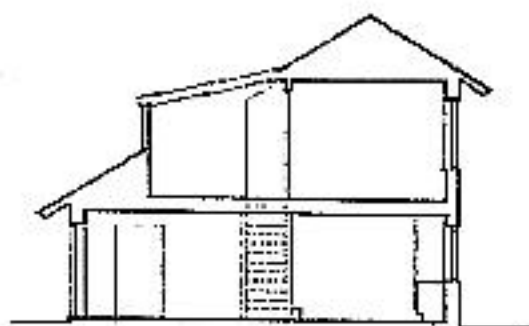


1. sal

# Boligtype 4C.1 106 m<sup>2</sup>

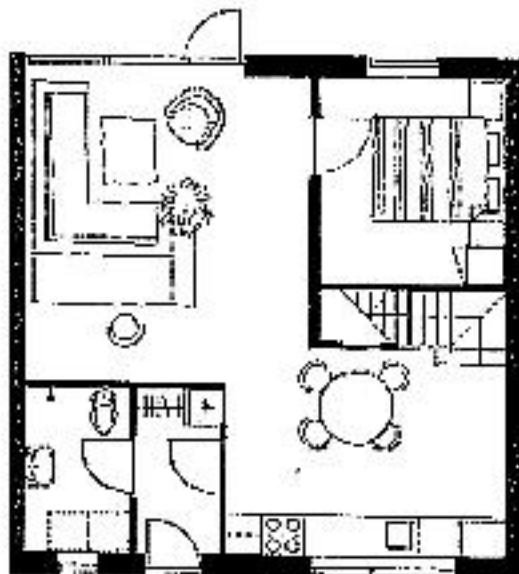
REV. D. 16.3.85

Andelsboligforeningen  
HUMLEBÆK I

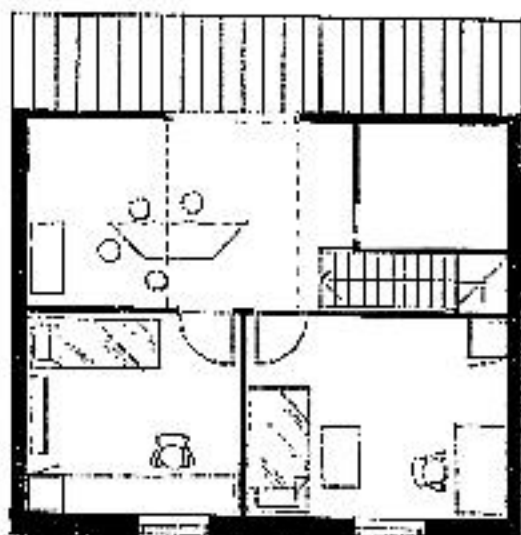


Boligtypens placering i bebyggelsen

Bestemmelser: 416 418 422 424 426 428  
432 434 436 450 462 464



1. etage



2. etage

Forhold for ændringer. Der kan foreskives andre ændringer i råd og indretning

Plan, mål 1:100

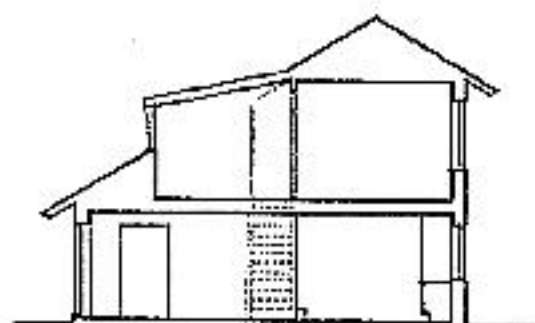
1 cm = 1 m

0 1 2 3 4 5 6 7 8 9 10

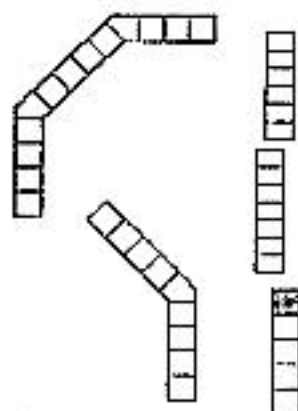
# Boligtype 4C.2 106 m<sup>2</sup>

Rev. d. 16.3.88

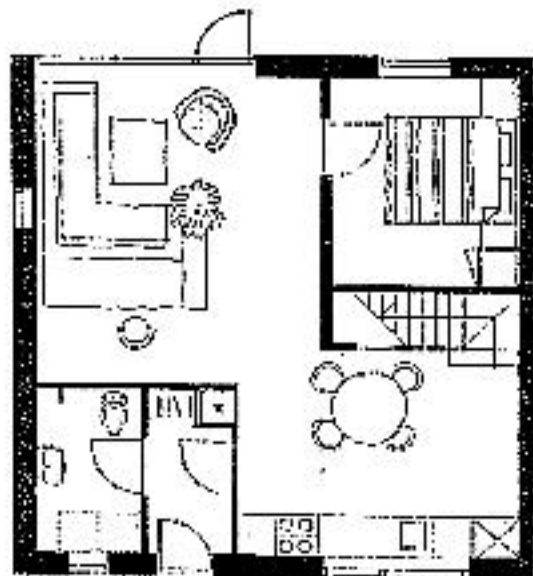
Andelsboligforeningen  
HUMLEBÆK I



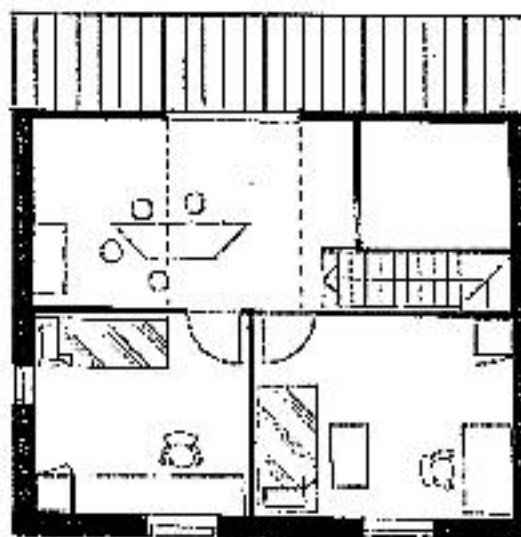
Flaskehøj 565



Boligtypens placering i bebyggelsen



Stuen



1. sal

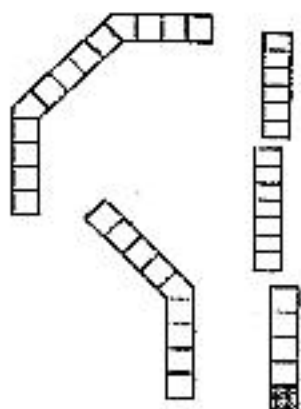
# Boligtype 4C.3 106 m<sup>2</sup>

Rev. 6. 10.3.88

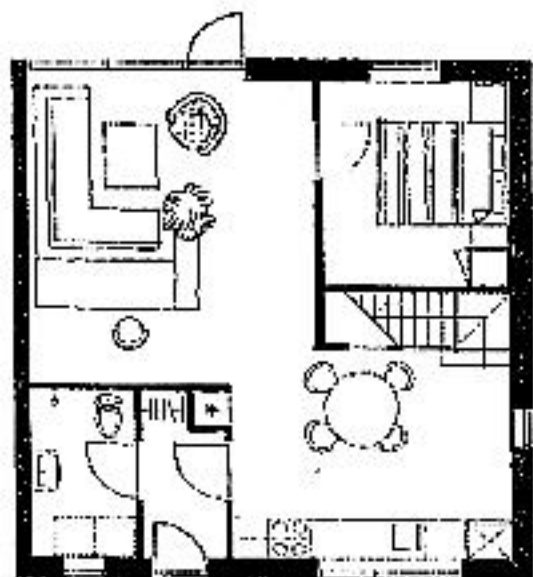
Andelsboligforeningen  
HUMLEBÆK I



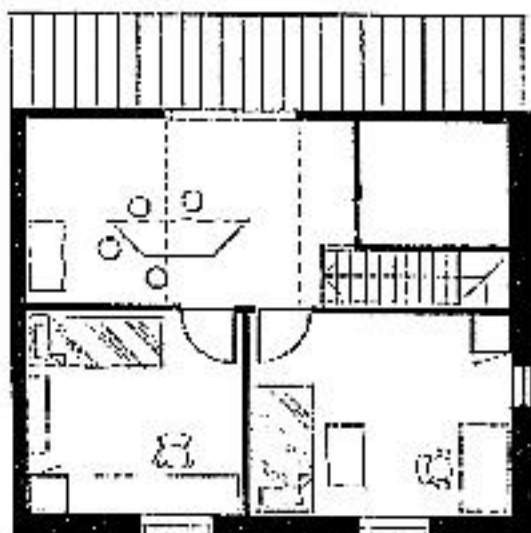
Illustration 458



Boligtypens placering i bebyggelsen



Stuen



1. sal